

Climate and Health in Colorado: The Connection



**Chrissy Esposito and Karam
Ahmad**
Data Visualization and Policy Analyst | Policy
Analyst

EEE Presentation

October 15, 2018



ABOUT US

We believe that sound evidence and solid analysis leads to better health policy, and that better health policy leads to healthier Coloradans.

That is our work as Colorado's leading nonprofit and nonpartisan health policy research group.

And we are passionate about it.

Agenda

- Introduction to Climate Change and Health
- The Connection: Climate Change and Health in Colorado
- CHI's Health and Climate Index
- Actions and Solutions



Key Takeaways

- As Colorado's climate changes, people are likely to experience adverse health effects related to rising temperatures, extreme weather events, poor air quality, and severe drought.
- CHI created an index to examine how different regions' geography, social demographics, and policies contribute to the health effects of a changing climate.
- Communities, states, and others are beginning to take steps to address the impact of climate change on health



Climate Change in the News

A 2018 Economics Nobel winner created an

Harvard
Business
Review

SUSTAINABILITY

Why People Aren't Motivated to Address Climate Change

by Art Markman

OCTOBER 11, 2018

[SUMMARY](#) [SAVE](#) [SHARE](#) [COMMENT](#) [HH TEXT SIZE](#) [PRINT](#)



GLOBAL W

an IPCC special re
warming of 1.5 °C
related global gree
in the context of s
to the threat of cli
development, and

Summar

This Summary for Polic
First Joint Session of W
and accepted by the 48
Republic of Korea, 6 Oc

SL



When you hear “Climate Change,” what do you picture?



coloradohealthinstitute.org



@COHealthIns



Why are we here?

- Climate change is a **public health issue.**
- Last year was the American Public Health Association's "**Year of Climate Change and Health.**"

"Climate change is public health's greatest challenge. Everyone has a role in public health and climate change whether they know it or not."

- APHA Executive Director Georges Benjamin



"Climate change is public health's greatest challenge. Everyone has a role in public health and climate change whether they know it or not."

- APHA Executive Director Georges Benjamin



A Time of Uncertainty

- How we address climate change (federal vs. state, local)
- Time of great division, partisanship
- Most people believe the climate is changing, but not everyone thinks it will harm them personally



While everyone may not agree on the science ...

- It's important to consider the impacts of climate change on our health.
- Put forth solutions and ways of addressing these changes.



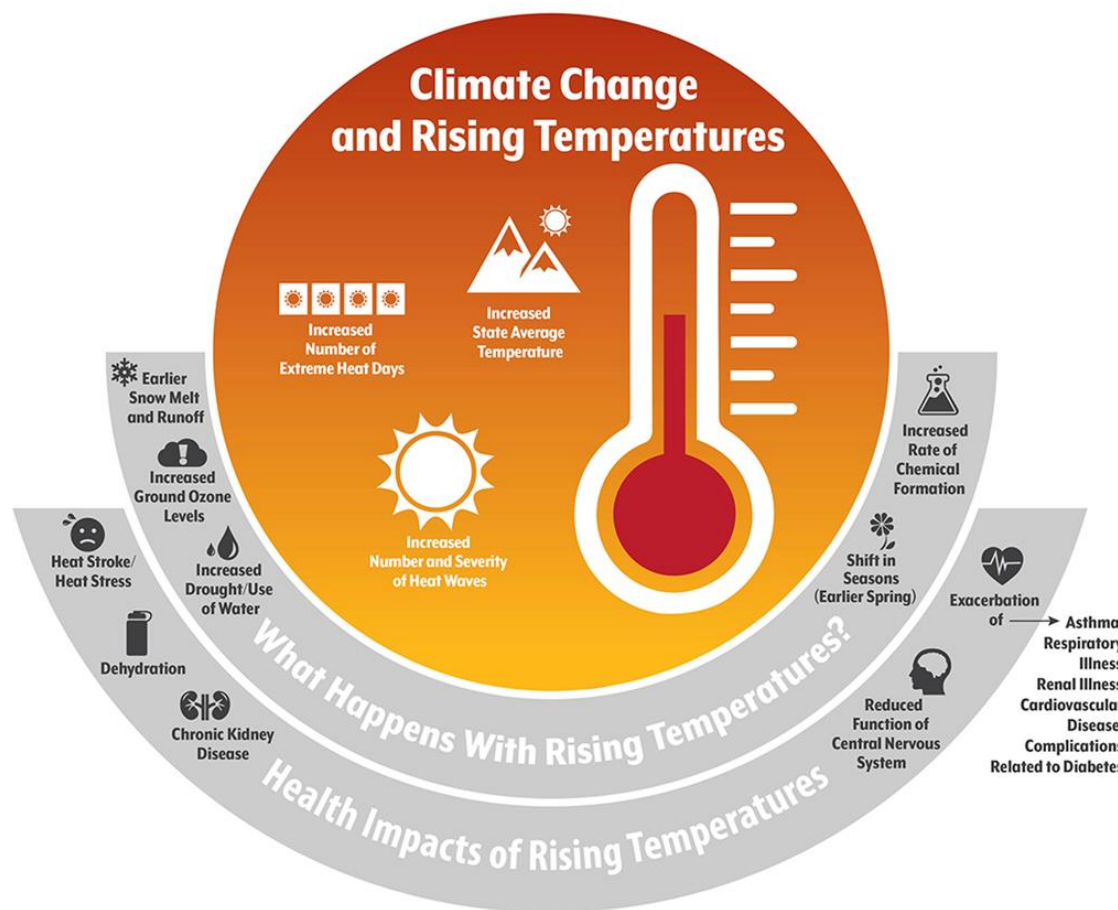
Level Setting

- Focus on Colorado
- Not projecting or predicting what climate change will look like
- Looking at health vulnerability to climate change
- It's already occurring

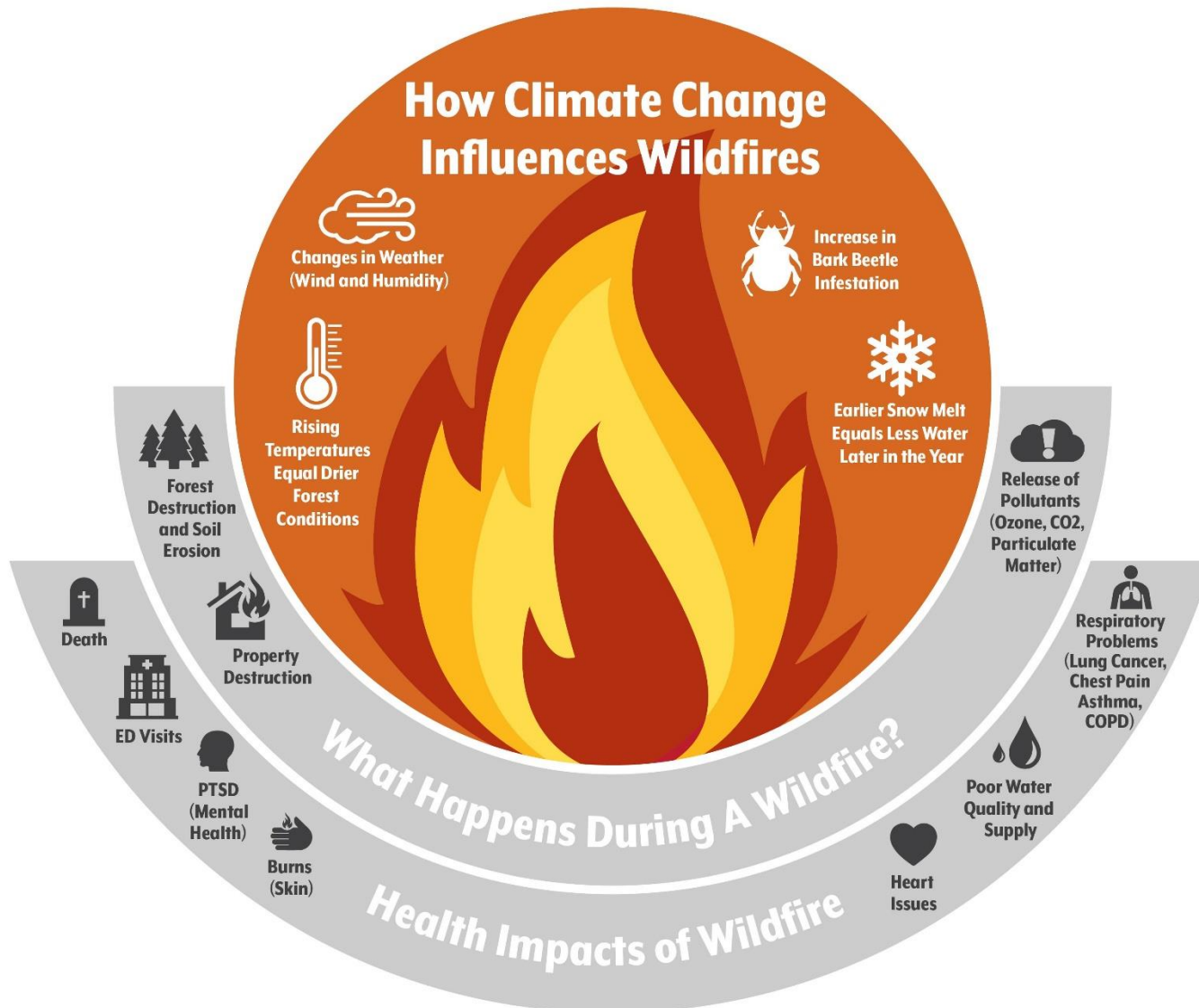


Climate and Health in Colorado

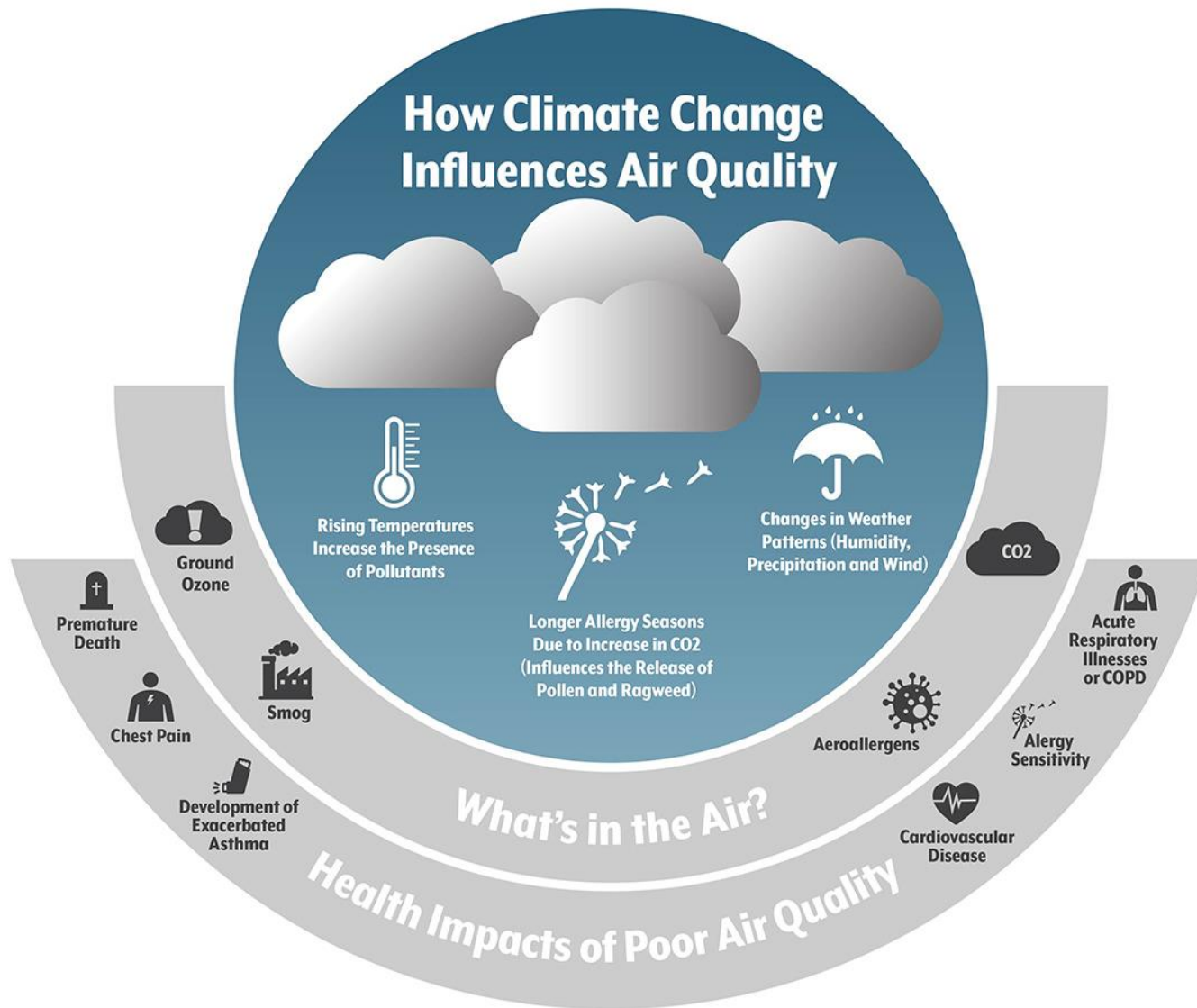
- Climate change is currently happening in Colorado



Wildfires



Poor Air Quality

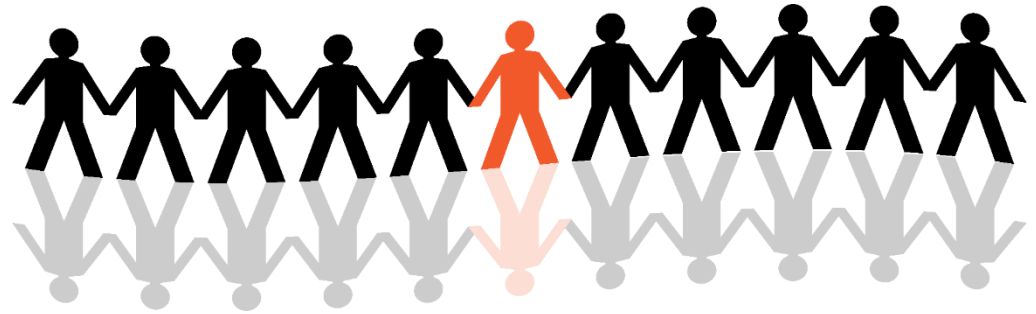




Who Does Climate Change Affect?

Some Populations Are More Vulnerable Than Others

- Children
- Pregnant Women
- Older Adults
- Residents with Chronic Illnesses
- Outdoor Workers
- Residents Living in Poverty





CHI's Health and Climate Index

The CHI Health and Climate Index

- A pioneering effort to quantify local effects
- Two dozen variables in three categories

Exposure

- Extreme heat days
- Heat-related hospitalizations
- Others

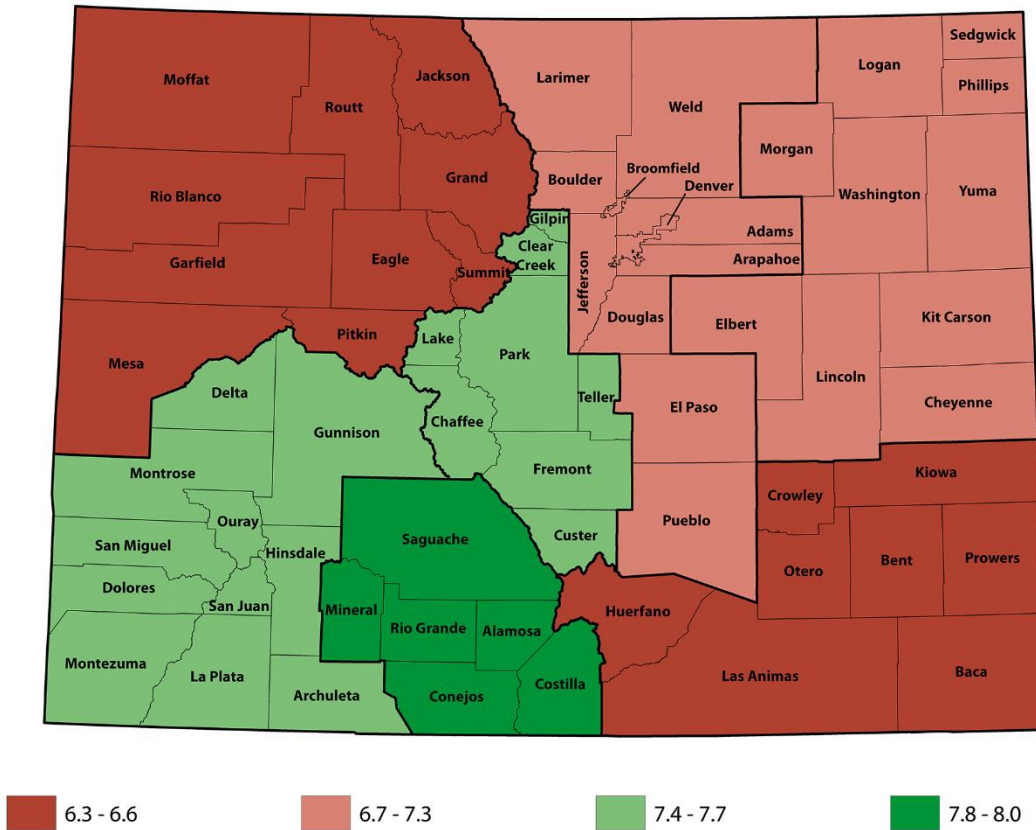
Demographics

- Age (young and old)
- COPD
- Diabetes

Preparedness

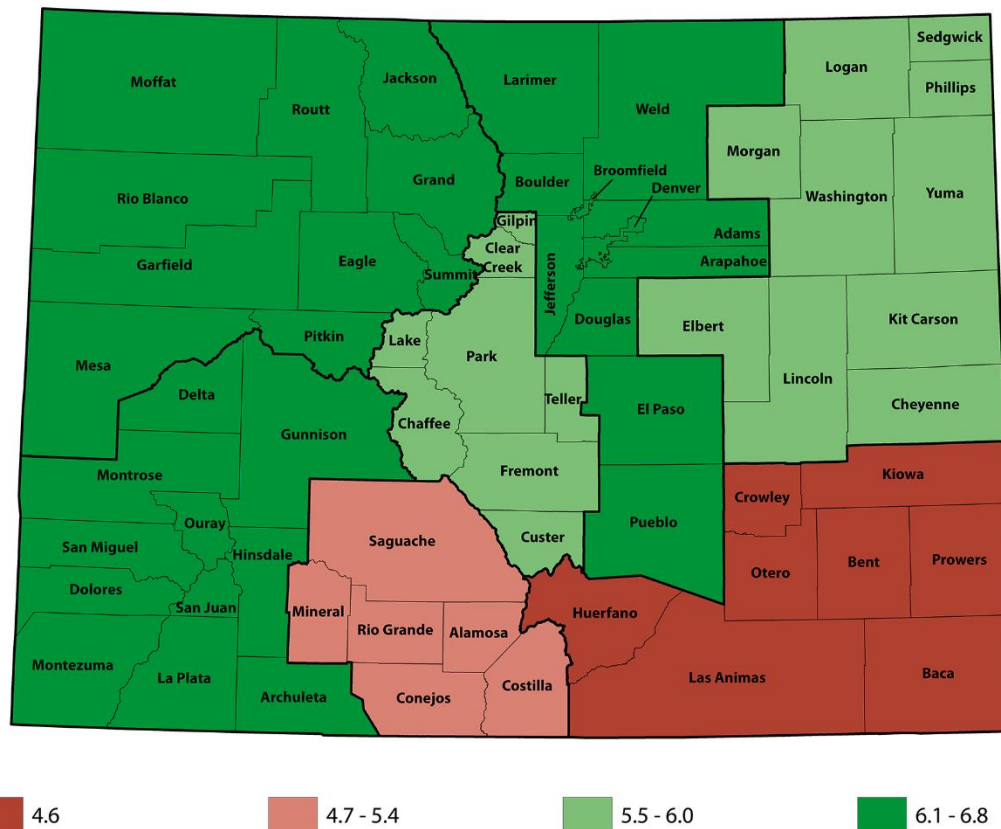
- Public attitudes
- County Plans
- Others

Exposure



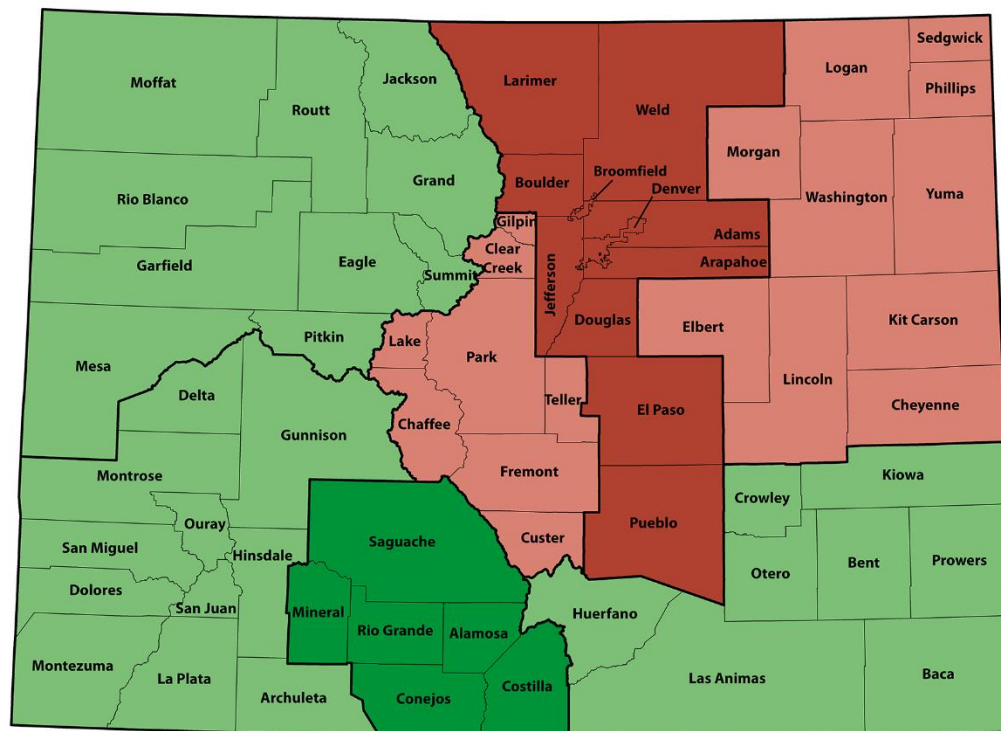
Number of Extreme Heat Days | Weeks in Severe to Exceptional Drought | Wildfire Risk | Drinking Water Risk | Acres Burned by Wildfires | Hospitalizations Related to Heat Illness | Emergency Department Visits Related to Heat Illness

Demographics



Poverty | High School Diploma | Older Housing | Unemployment | Ages Under 18 |
Ages 65 Plus | Asthma | Cardiovascular Disease | COPD | Diabetes

Attitudes and Actions



5.6

5.7 - 5.8

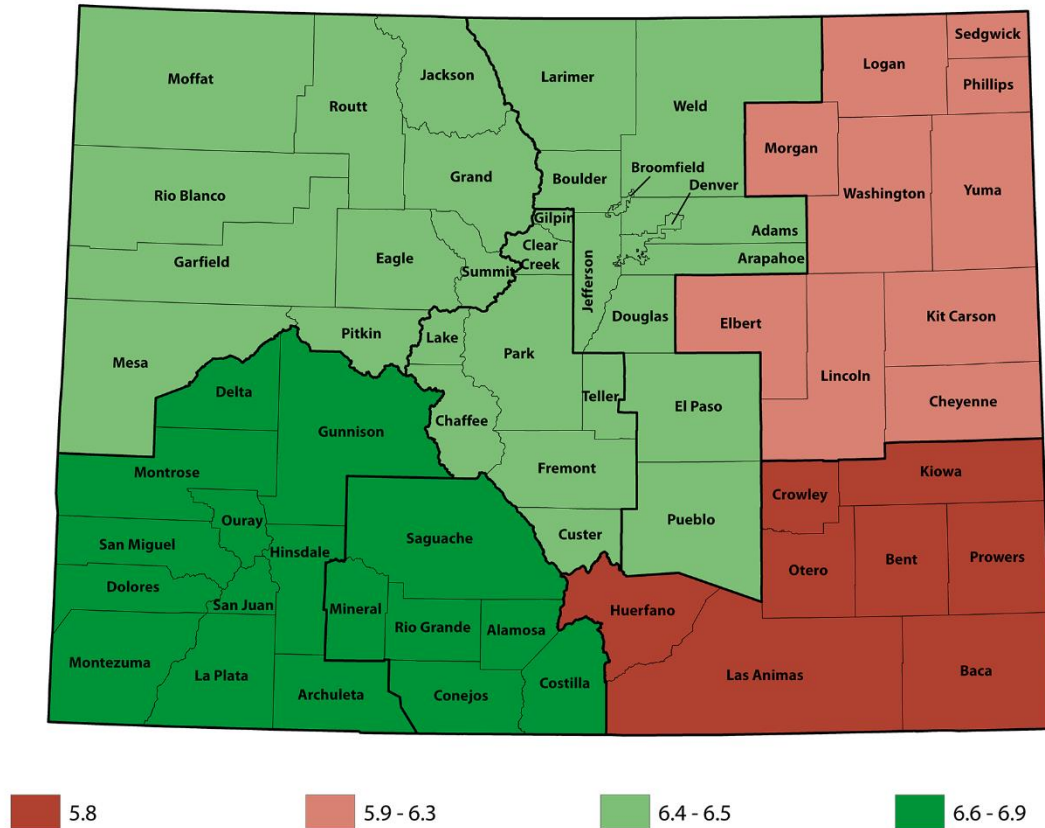
5.9 - 6.2

6.3 - 7.4

Belief that Global Warming is Happening | Belief that Global Warming Will Harm Them Personally | Belief that Global Warming Will Harm Future Generations | Local Public Health Plans | Wildland Urban Interface (WUI)



Overall





What now?

What is Colorado's Polar Bear?



Actions and Solutions

- Individual
 - Talk about it.
 - Local Awareness
 - Green initiatives
- Local
 - City Climate Action Plans
 - Firewise Communities
 - Climate Mayors
- County
 - Local Public Health Plans
 - County Climate Action Plans
 - Regional Environmental Health Collaborations
- State
 - Colorado Climate Plan
 - The US Climate Alliance
 - State Emergency Preparedness Plans





Chrissy Esposito and Karam Ahmad

espositoc@coloradohealthinstitute.org

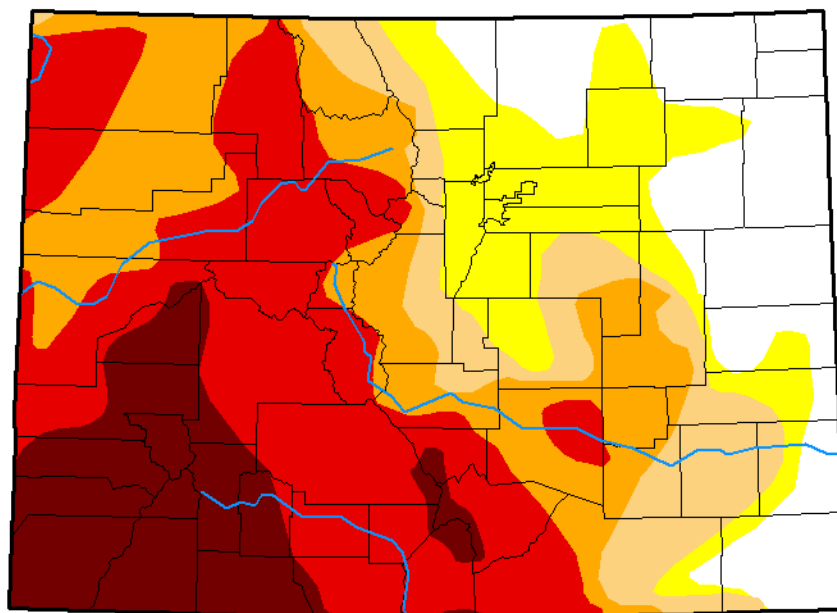
ahmadk@coloradohealthinstitute.org


COLORADO HEALTH INSTITUTE
coloradohealthinstitute.org   @COHealthInst

Drought Maps

U.S. Drought Monitor Colorado

October 9, 2018
(Released Thursday, Oct. 11, 2018)
Valid 8 a.m. EDT



Intensity:

- D0 Abnormally Dry
- D1 Moderate Drought
- D2 Severe Drought
- D3 Extreme Drought
- D4 Exceptional Drought

The Drought Monitor focuses on broad-scale conditions. Local conditions may vary. See accompanying text summary for forecast statements.

Author:

Richard Tinker
CPC/NOAA/NWS/NCEP



<http://droughtmonitor.unl.edu/>



coloradohealthinstitute.org   @COHealthInst